

SOLAHHD GLX40/60 Cover Enclosure Kit

Designed for the following power supplies: GL20 Series, GL40 Series and GL60 Series

What's Included

- One base
- One cover
- One insulator sheet (plastic)
- Four M3 x 6mm Pan head screws (with attached washers)
- Two M3 x 6mm countersunk screws
- One M4 nut (for earth ground stud)
- One M4 spring washer (for earth ground stud)
- One M4 star washer (for earth ground stud)

Assembly

1. Place insulator sheet over base standoffs.
2. Place power supply over insulator sheet and align with base standoffs.
NOTE: Ensure the insulator sheet is correctly fitted in the base under the PBC to maintain safety creepage and clearances.
3. Secure power supply to base using the supplied M3 x 6mm Pan head screws (4).
4. Place cover over power supply and align with base countersink holes.
5. Secure cover to base using the supplied M3 x 6mm countersunk screws (2).

Notes

- Ensure base is firmly connected to supply earth via the earth ground stud \oplus .
- Ensure that the relevant safety standards (e.g. EN60950-1) are complied with, in respect to creepage and clearance distances, and distances through insulation.
- All dimensions are in inches [mm].

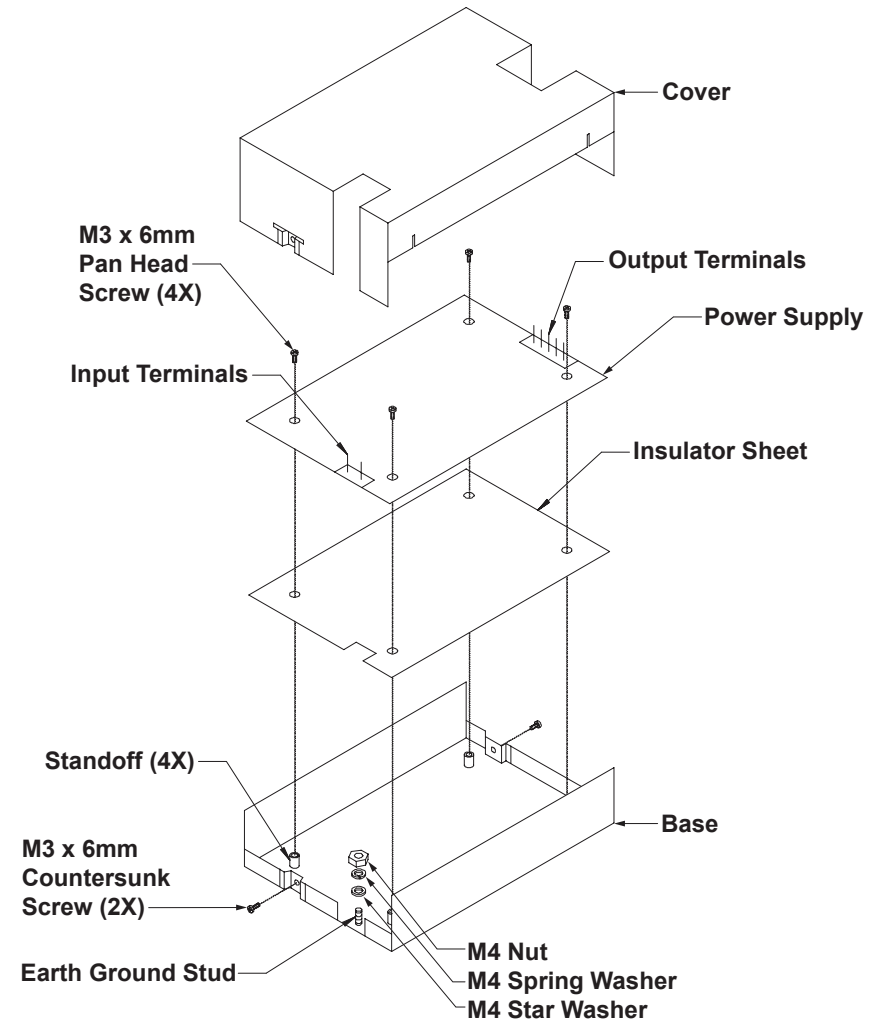


Figure 1: Assembly Drawing

Overall Dimensions

GL20 Series/GL40 Series: 5.90 in. [150.0 mm] x 3.86 in. [98.0 mm] x 1.50 in. [38.0 mm]

GL60 Series: 5.90 in. [150.0 mm] x 3.86 in. [98.0 mm] x 1.97 in. [50.0 mm]

Mounting

Three options are available:

1. Bottom mounting using M3 inserts. Maximum screw protrusion is 0.08 in. [2.0 mm].
2. Side mounting using 4 mm clear holes, plus two keyways.
3. Side mounting using M3 inserts. Maximum screw protrusion is 0.24 in. [6.0 mm].

Technical Support

U.S.: (800) 377-4384 • International: (847) 268-6000

E-mail: tech@solahd.com • Web site: www.solahd.com

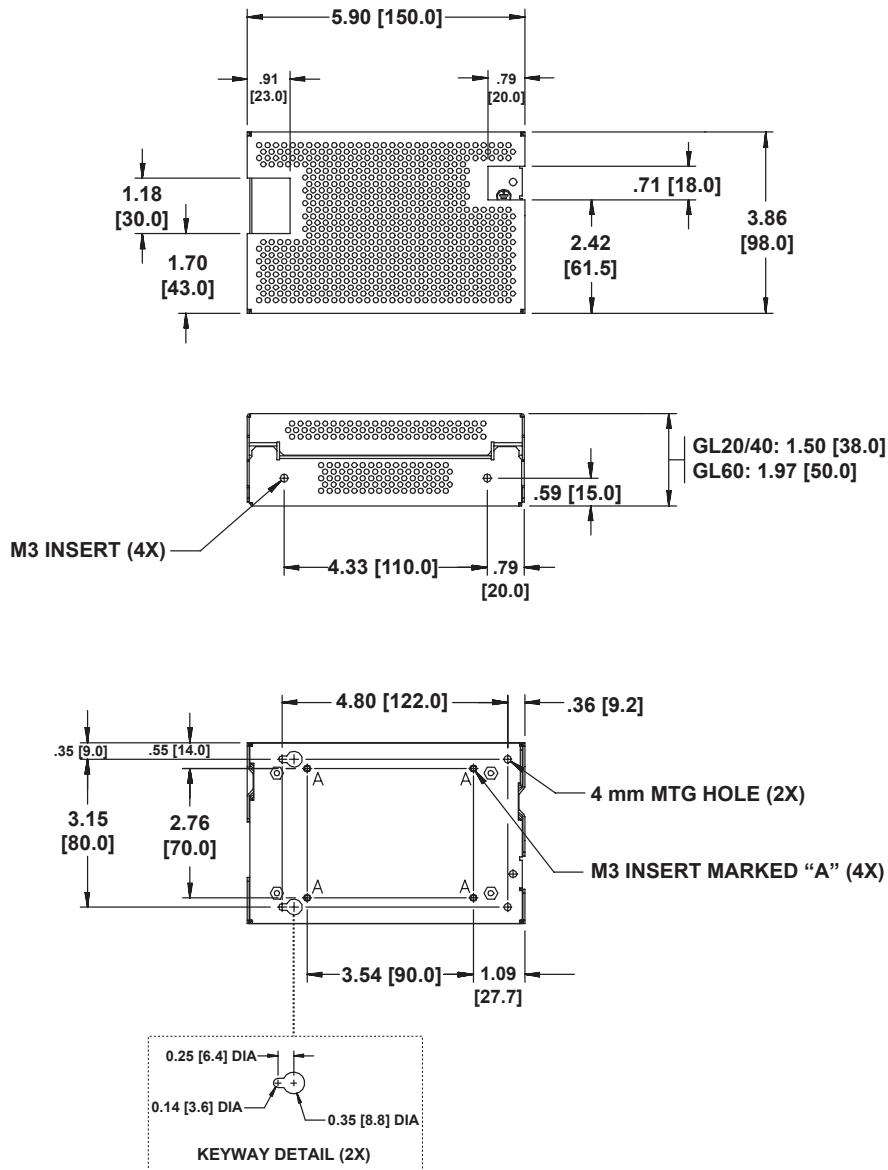


Figure 2: Mechanical Drawing